

0161 SERIES



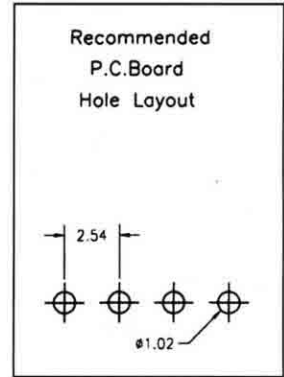
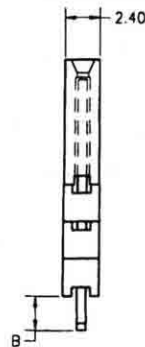
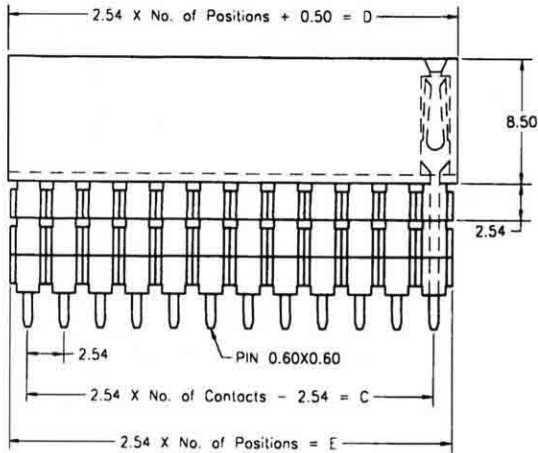
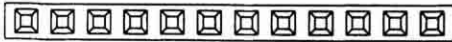
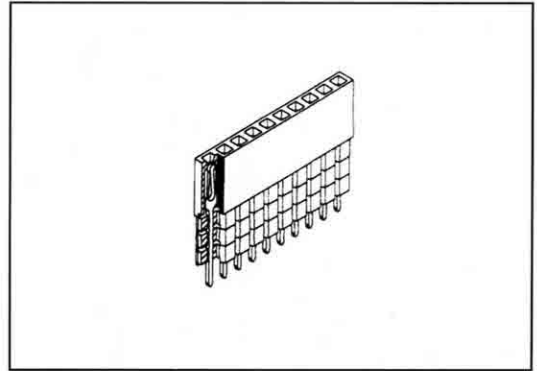
Pitch: 2.54mm(0.1"), Female Header, Single Row, Elevated TYPE

Specifications

Current Rating: 3 Amp
 Insulation Resistance: 500 MΩ Min.
 Dielectric Withstanding: 600 VAC
 Contact Resistance: 20 mΩ Max.
 Operating Temperature: -40°C to +105°C

Materials

Contact Material: Copper Alloy
 Contact Plating: Gold/Tin over Nickel
 Insulator: Glass Filled Polyester (UL 94V-0)



No. of Pins/Row	Dimension Information		
	C	D	E
02	2.54	5.58	5.08
03	5.08	8.12	7.62
04	7.62	10.66	10.16
05	10.16	13.20	12.70
06	12.70	15.74	15.24
07	15.24	18.28	17.78
08	17.78	20.82	20.32
09	20.32	23.36	22.86
10	22.86	25.90	25.40
11	25.40	28.44	27.94
12	27.94	30.98	30.48
13	30.48	33.52	33.02
14	33.02	36.06	35.56

No. of Pins/Row	Dimension Information		
	C	D	E
15	35.56	38.60	38.10
16	38.10	41.14	40.64
17	40.64	43.68	43.18
18	43.18	46.22	45.72
19	45.72	48.76	48.26
20	48.26	51.30	50.80
21	50.80	53.84	53.34
22	53.34	56.38	55.88
23	55.88	58.92	58.42
24	58.42	61.46	60.96
25	60.96	64.00	63.50
26	63.50	66.54	66.04
27	66.04	69.08	68.58

No. of Pins/Row	Dimension Information		
	C	D	E
28	68.58	71.62	71.12
29	71.12	74.16	73.66
30	73.66	76.70	76.20
31	76.20	79.24	78.74
32	78.74	81.78	81.28
33	81.28	84.32	83.82
34	83.82	86.86	86.36
35	86.36	89.40	88.90
36	88.90	91.94	91.44
37	91.44	94.48	93.98
38	93.98	97.02	96.52
39	96.52	99.56	99.06
40	99.06	102.10	101.60

Ordering Information

0161 - 2 1 X X

2: Gold

X X 0

Position